



# NetBrain® Enterprise Edition

The Operating System of Your Total Network



## Product Overview

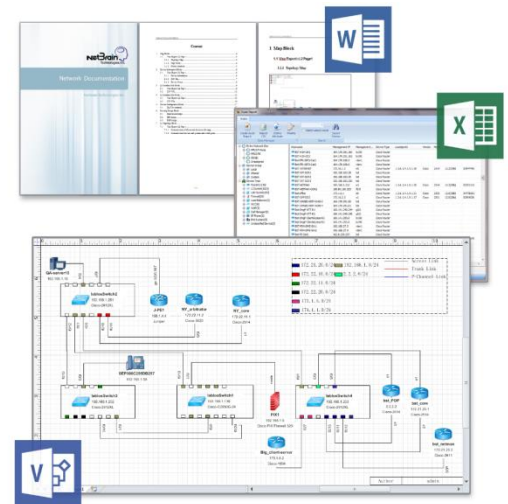
When it comes to troubleshooting, design, and compliance, network managers have a tough job – they often rely on outdated documentation while manually accessing network information one device at a time. In efforts to speed up these tasks, many engineers develop in-house scripts, but these are difficult to write and maintain.

NetBrain Enterprise Edition automates time-consuming tasks associated with network documentation, design, and troubleshooting with powerful and customizable map-driven automation. Leveraging a data-driven map, NetBrain enables users to collect and diagnose network data automatically, to accelerate virtually any network task.

## Automate Documentation

Too often, network documentation is outdated or doesn't even exist. With NetBrain, engineers can create customized documentation on-the-fly. NetBrain automates topology diagrams, inventory reports, and design documents and keeps them updated automatically:

- **Discover live network instantly** – NetBrain collects and organizes detailed topology and design data from the network
- **Create documentation dynamically** – NetBrain creates up-to-date documentation on-demand
- **Update documentation automatically** – NetBrain keeps documentation updated with routine benchmarks

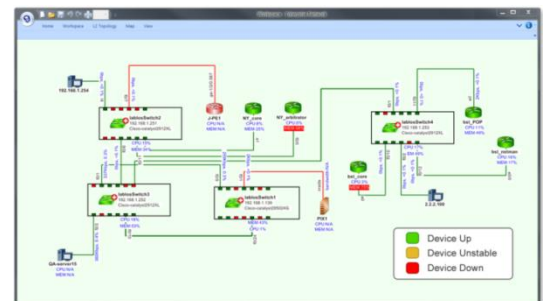


*Automate Network Documentation*

## Automate Troubleshooting Diagnosis

As critical as the network is, troubleshooting is a largely manual and time-consuming process. For any particular outage, there can be hundreds of possible causes. NetBrain automates hundreds of diagnoses and instantly detects anomalies in network configuration and performance:

- **Instant and targeted map** – Target the problem area with a data-rich dynamic diagram
- **Holistic historical analysis** – Leverage historical data to find recent (and potentially problematic) changes
- **Hundreds of automated diagnoses** – Automatically diagnose routing, switching, multicasting, QoS, and more



*Automate Performance Diagnosis*

## Automate Change Verification

Nearly half of all outages can be traced back to a network change. To help make changes less risky, NetBrain automates the rollout of configuration changes and validates their impact across the network:

- **Deploy changes** across the network, with one click
- **Analyze change impact** to see the effect on configuration and routing across the network
- **Document changes** with one-click Word documentation

## Key Feature Highlights

- o Comprehensive Auto-Discovery**  
 High-speed discovery engine finds and inventories every network device and captures deep L2/L3 configuration and design information.
- o Dynamic Network Mapping**  
 Exclusive mapping technology renders deep network intelligence on a dynamically-created diagram. Diagrams stay updated automatically.
- o Path Discovery and Mapping**  
 Supporting L1-L7 deep path discovery, NetBrain can map traffic flows between two endpoints, through any network device.
- o Automated Network Documentation**  
 Generate network documentation with one-click including L2/L3 Visio Diagrams, inventory spreadsheets, and compliance/design documents.
- o Integrated Monitoring**  
 Pinpoint network performance issues such as bottlenecks and interface errors, in real-time on either an L2 or L3 map.
- o Visual Troubleshooting**  
 Isolate network problems at the device level by detecting performance issues, automating diagnoses, and highlighting recent changes.
- o Historical Benchmarks**  
 NetBrain builds an extensive baseline of the network. Changes to the network are captured automatically with recurring benchmarks.
- o Change Automation & Verification**  
 NetBrain automatically deploys configuration changes across multiple devices and instantly validates the impact they have on the network.
- o Customizable Automation Technology**  
 Exclusive Qapp technology provides add-on functionality to NetBrain. Adding a Qapp is like installing an app on a smartphone.
- o Enterprise Scalability**  
 Scalability is achieved through server deployment, supporting networks with tens of thousands of network devices.

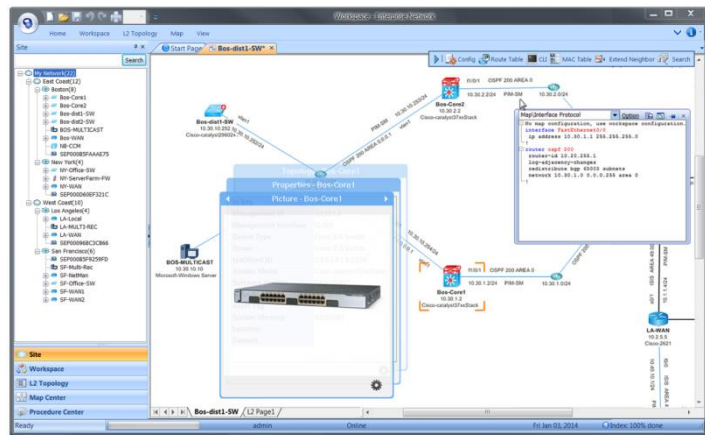
## How it Works

NetBrain is a powerful yet intuitive network automation solution, combining the customization of scripting with the familiarity of a network map as the user interface. Dynamic network diagrams, known as Qmaps, are rich with network data collected from a deep network discovery and enhanced with live performance statistics.

## Qmap™ - Dynamic Mapping Technology

NetBrain's unique Qmaps embed both topology and underlying design data into the map, making information quickly accessible without relying on memory or the command-line interface. Dynamic diagrams have the following benefits:

- **On-demand creation** – Create customized diagrams on-the-fly
- **Data-Driven** – Every device on the map has hundreds of attributes
- **Dynamic Zoom** – Access detailed elements by zooming into the map



L3 Qmap with Device Attributes

## Qapp™ - Customizable Automation Technology

Similar to adding an app to your smartphone, you can enhance NetBrain's capabilities with a 'Qapp'. Qapps can be programmed through a visual programming environment, with no scripting, to automate network analysis and diagnosis. Each Qapp effectively digitizes an engineer's knowledge, making it executable for the whole team. Use Qapps to:

- **Automate troubleshooting diagnoses** – Tailor a customized diagnosis for routing, multicasting, QoS, and more
- **Automate compliance checks** – Parse hundreds of config files to find compliance anomalies
- **Automate network tests** – Test connectivity across the network

## Scalability & Deployment

NetBrain Enterprise Suite is designed to handle very large networks with tens of thousands of devices. Scalability is achieved by intelligently distributing computing resources across enterprise server(s).

